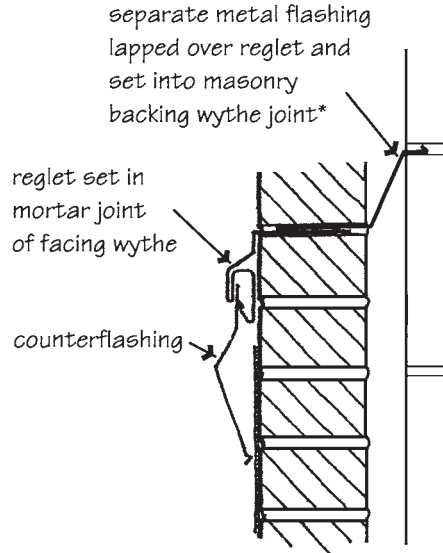
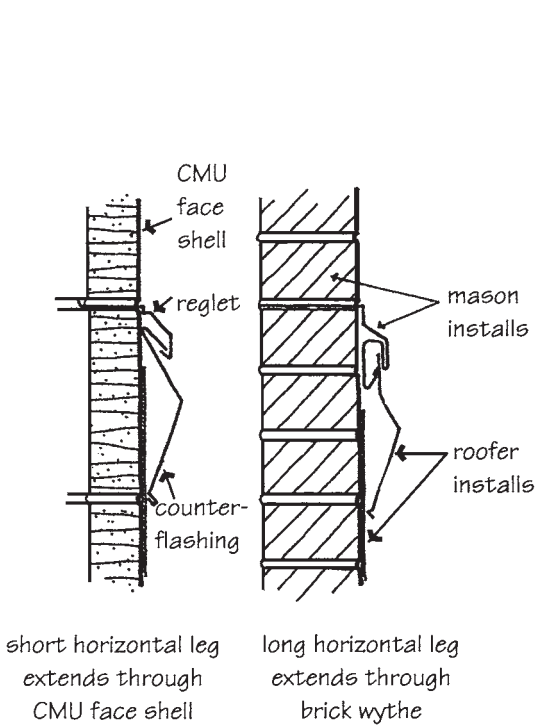


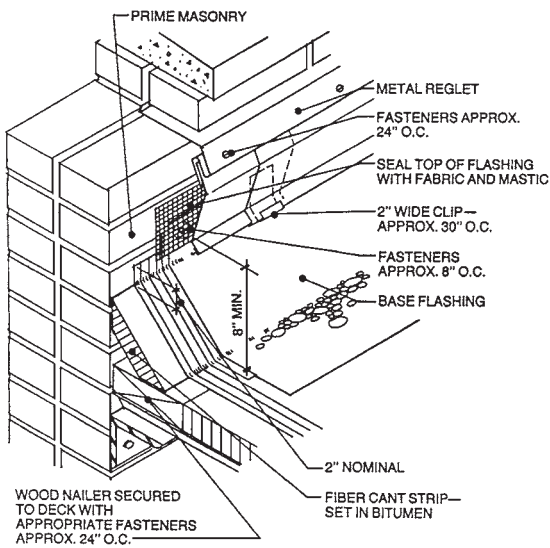
10.8 Shelf Angles



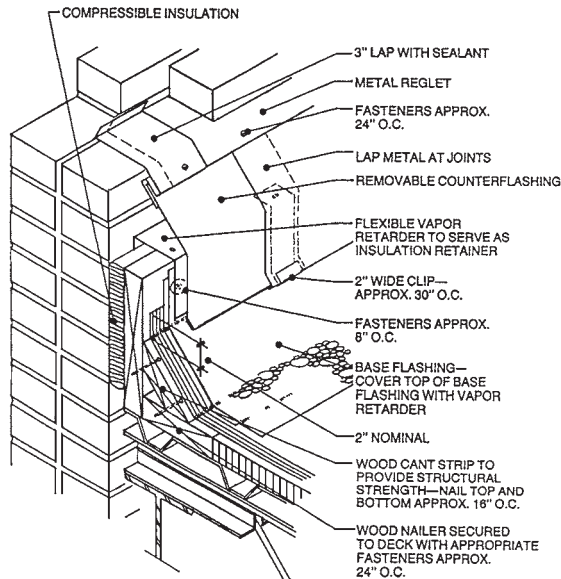
\* at veneer walls, lap moisture/air barrier membrane over top edge of flashing, adhere flashing to face of sheathing, use termination bar, or otherwise protect top edge of flashing from water penetration

MASONRY REGLETS

TWO-PIECE FLASHING AND REGLET WITH REMOVABLE COUNTERFLASHING



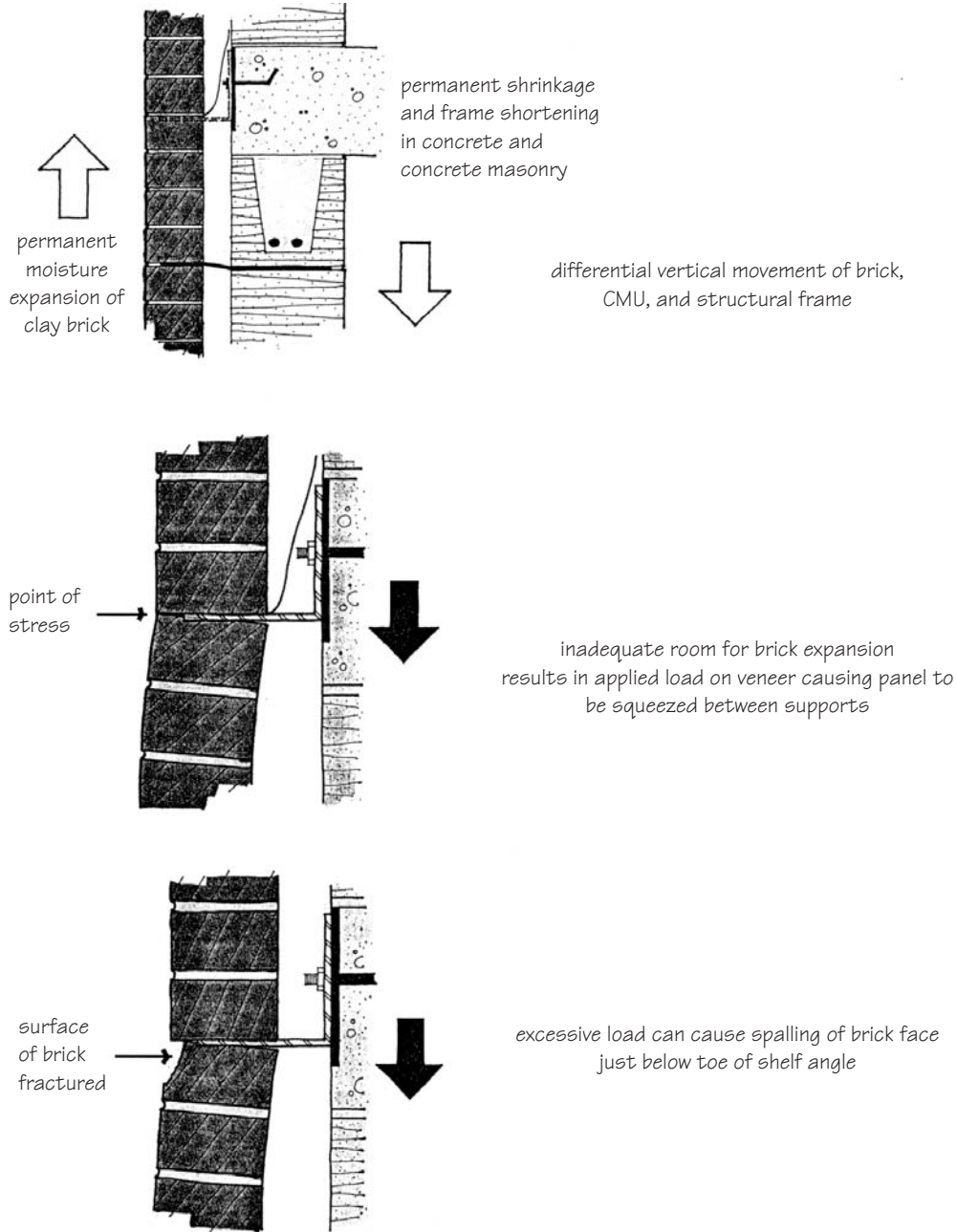
no allowance for differential movement  
roof deck supported by wall



preferred detail allows for differential movement  
roof deck not supported by wall

NRCA RECOMMENDED DETAILS FOR REGLETS AND COUNTERFLASHING AT ROOF

Figure 10-61 Reglets and two-piece flashing/counterflashings at roof-wall intersection.



**Figure 10-62** Soft joints below shelf angle accommodate differential movement.